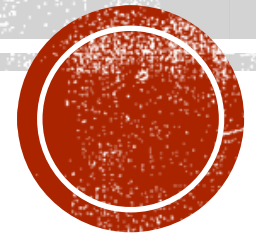




SUBCOMITÉ ISO/TC292





AGENDA

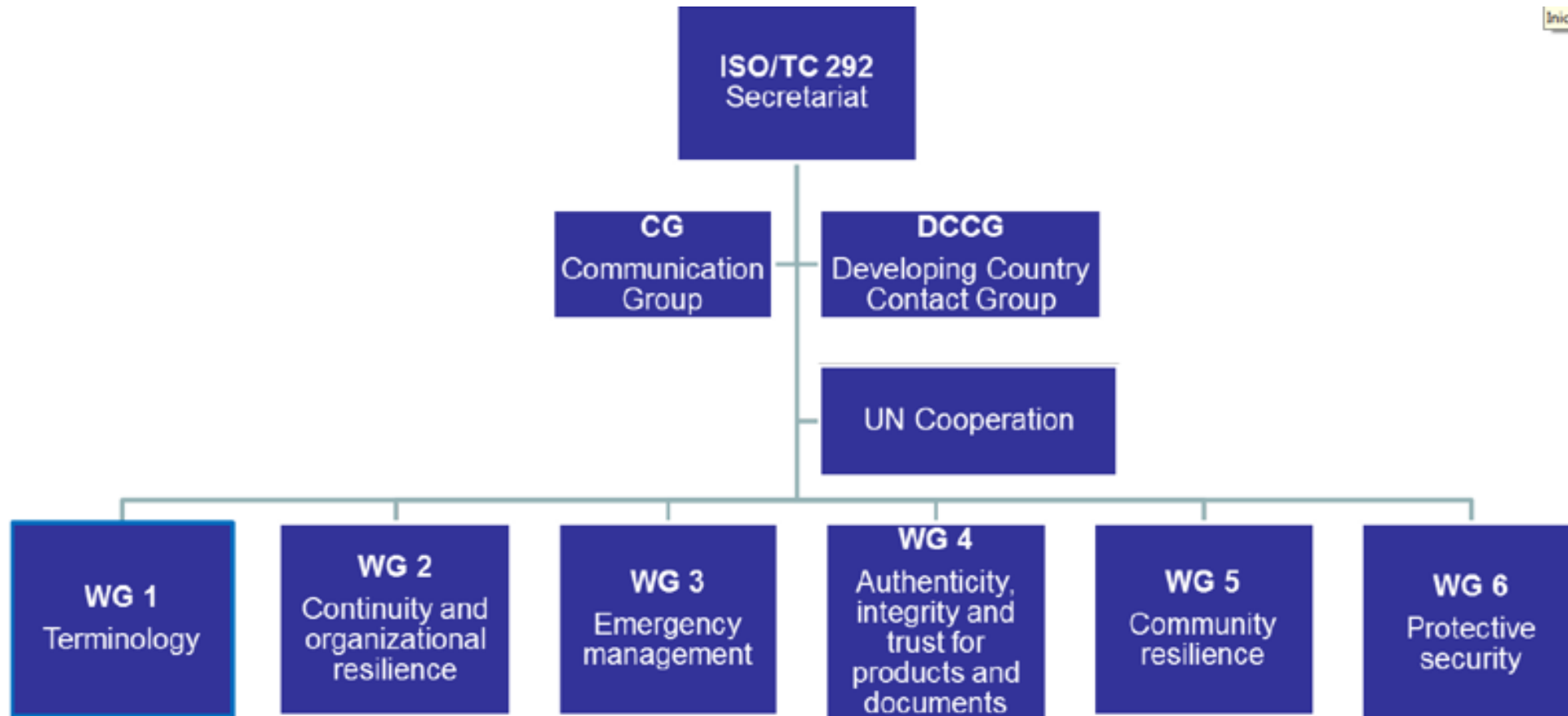
- ISO 292 Structure
- Introduction
- Main Challenges
- Standards
- International Commitment
- Conclusions



I. ISO 292 - Structure



Subcommittees / Working Groups



Iniciar se

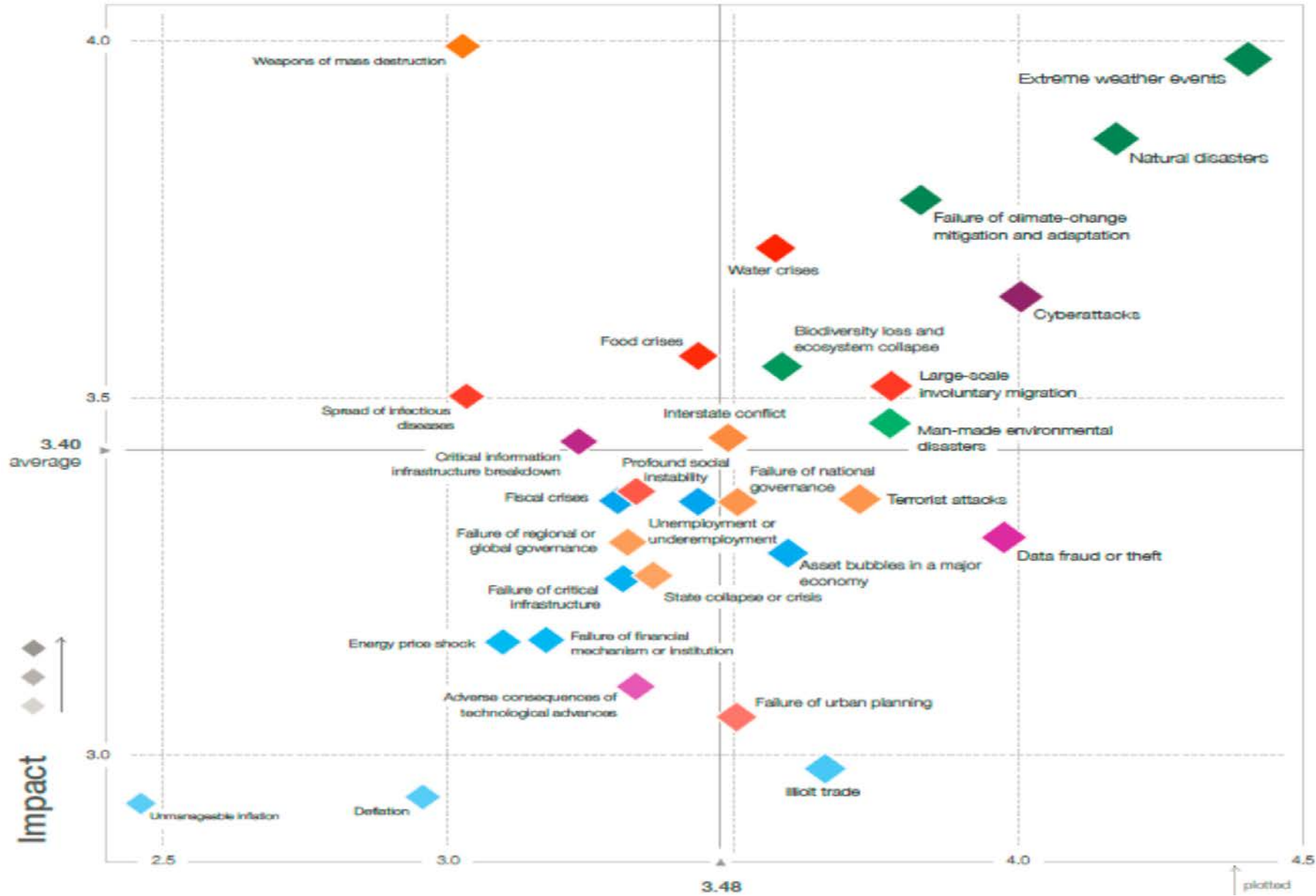


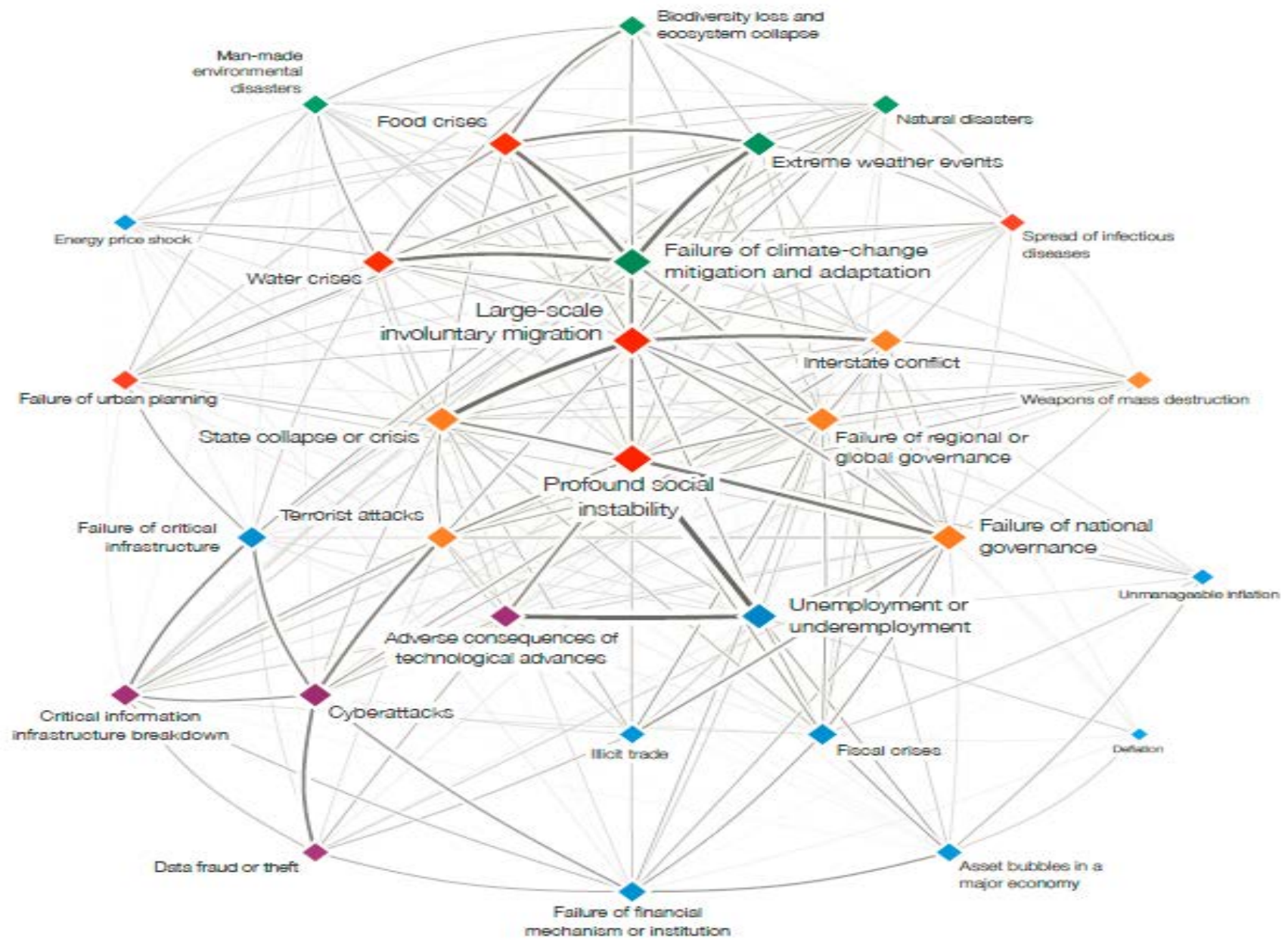
II. INTRODUCTION



The Global Risks Report 2018







III. MAIN CHALLENGES





- Climate change
- Natural disasters
- Diseases, Pandemias
- Wars
- Cyberattacks
- Terrorism
- Involuntary migrations
- Technological shift



IV. STANDARDS



- [ISO 22300:2018](#) Security and resilience – Vocabulary
- [Business continuity management](#)
[ISO 22301:2012](#) Societal security – Business continuity management systems – Requirements
[ISO/TS 22317:2015](#) Societal security – Business continuity management systems – Guidelines for business impact analysis
- [Emergency management](#)
[ISO 22320:2011](#) Societal security – Emergency management – Requirements for incident response
[ISO 22322:2015](#) Societal security – Emergency management – Guidelines for public warning
- [Community resilience](#)
[ISO 22315:2015](#) Societal security – Mass evacuation – Guidelines for planning
[ISO 22319:2017](#) Security and resilience - Community resilience - Guidelines for planning the involvement of spontaneous volunteers



V. INTERNATIONAL COMMITMENT



- Increasing number of participating countries within ISO 292
- Multilateral agreements on societal security initiatives
- Global participation on natural disasters help
- Raising on awareness and preparedness on incident response
- International cultural exchange not just within governments but also with NGO's, Universities and Private organizations
- Major participation within different ISO Comittes such as ISO 27K, ISO 31K, among others
- Continual revision and improvement on standards



VI. CONCLUSIONS



- Need support from governments, society, universities, enterprises, etc.
- Raise awareness on natural disasters, security, business continuity and crisis management in general
- Evaluate, monitor and response
- Adopt, Adapt and Apply (A Framework)
- Train people
- Improve
- Repeat!!!!



